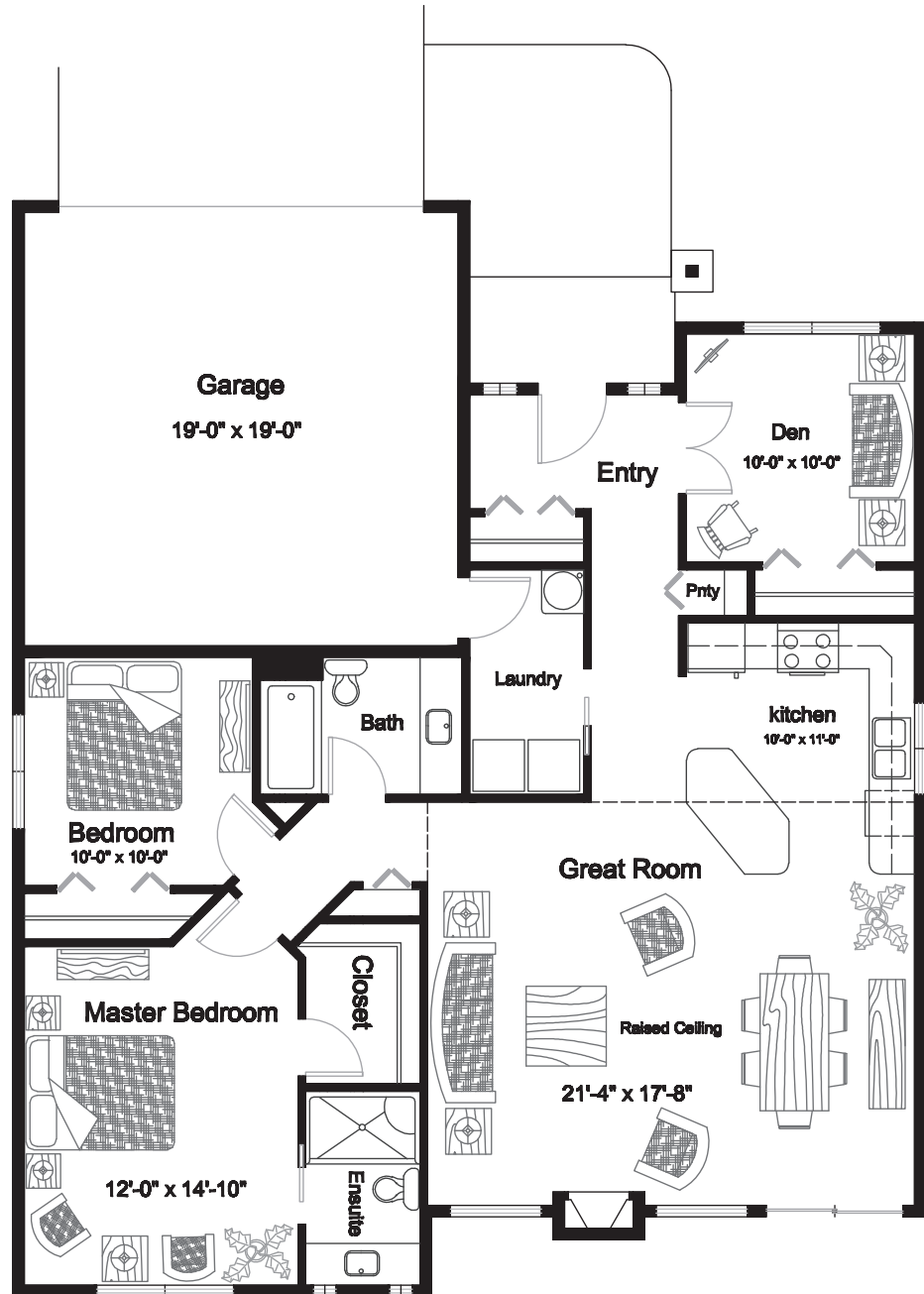


FLOOR PLANS - PINE



Main Floor: 1,329 sq ft
Total Finished: 1,329 sq ft
Balcony or Patio: 150 sq ft
Garage: 380 sq ft



SHIRLEY ZAILO &
RYAN ZAILO
RE/MAX CAMOSUN

101-791 Goldstream Ave
Victoria, BC, V9B 2X5
Phone: 250.478.4828
Fax: 250.478.6060

WWW.ARTISANPARK.CA



ARTISAN PARK
A NEIGHBOURHOOD OF NEW HOMES